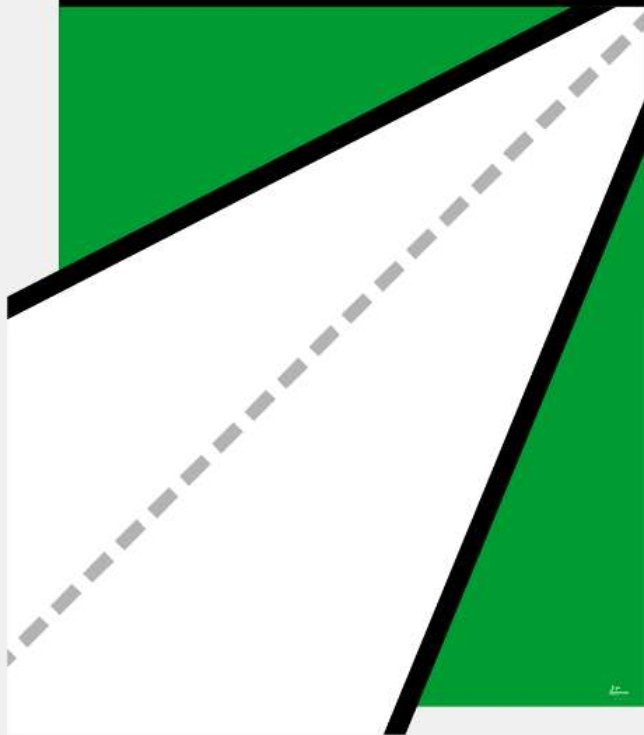


**MOVE  
ILLINOIS**



The Illinois Tollway  
**DRIVING  
THE FUTURE**





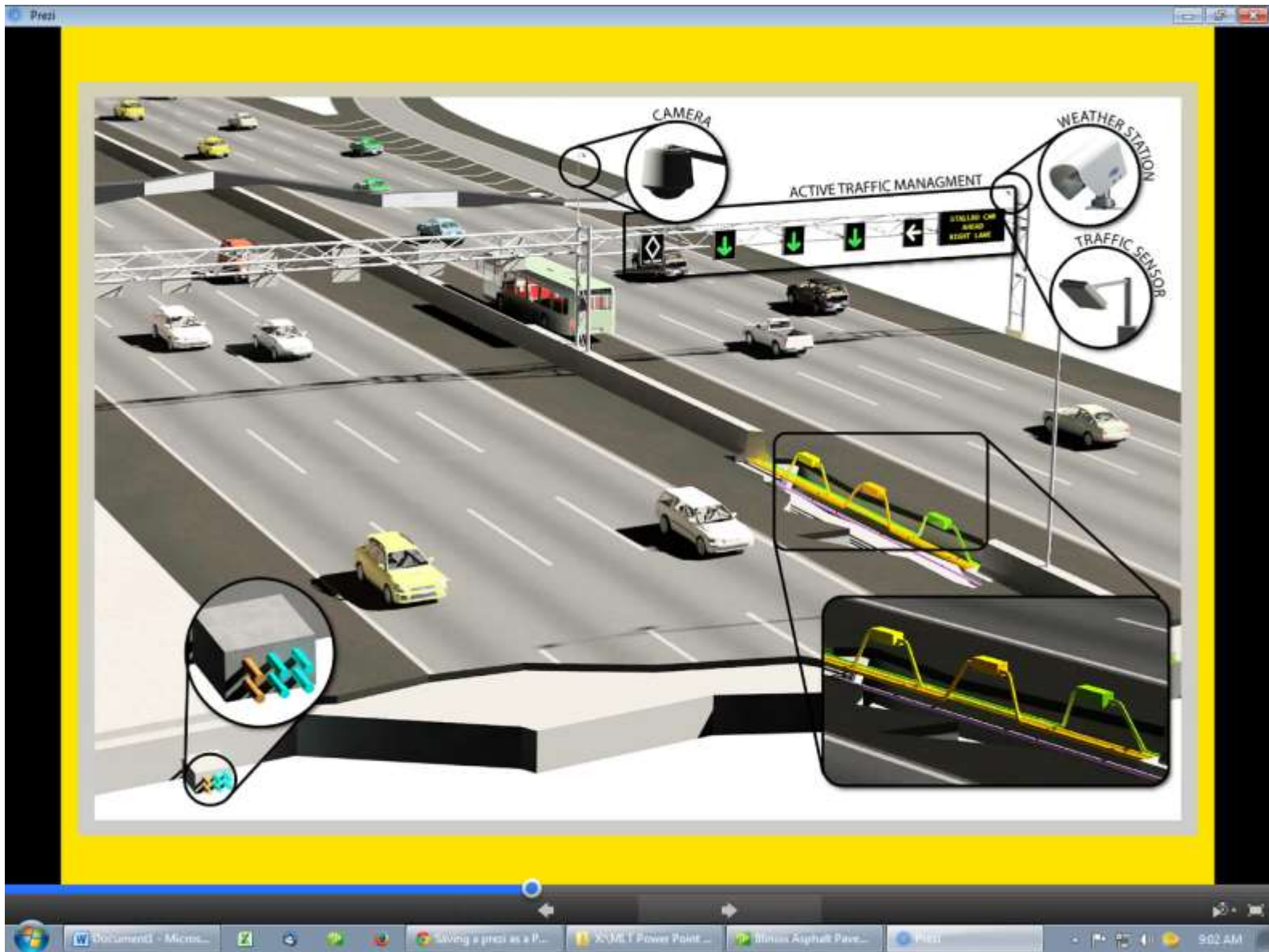
Prati

# TECHNOLOGY

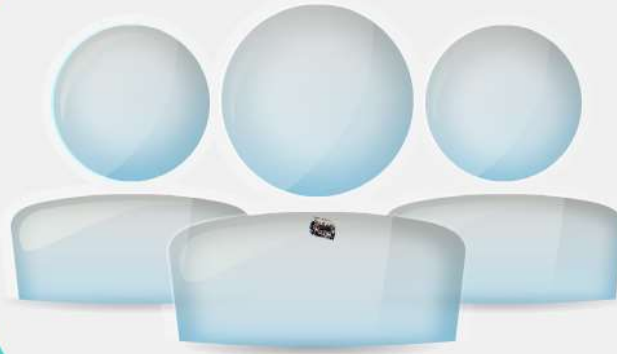


Document1 - Mic... Microsoft Excel - ... Saving a prezi as a... X-MLTY Power Poi... Illinois Alphabet Pa... Prati 9:02 AM

The image shows a Prezi presentation slide. The main content is the word "TECHNOLOGY" in a bold, black, sans-serif font, positioned above a stylized lightbulb icon. The lightbulb has a grey outline and a filament that resembles a circuit board. It is centered within a bright yellow ring, which is itself inside a larger, semi-transparent grey ring. The background is a light grey gradient. The slide is displayed in a Prezi window, with a taskbar at the bottom showing various open applications and the system clock at 9:02 AM.



# DELIVERY





# Everybody In, Nobody Left Out



# SUSTAINABILITY





# Illinois Tollway Building Green

USED  
360,000 tons  
OF RECYCLED ASPHALT



RECYCLED  
11,354 tons  
OF ASPHALT SHINGLES



RECYCLED  
304,643 tons  
OF CONCRETE



Nearly 946,000 tons of recycled concrete, asphalt and aggregate in the construction of new roads – enough to build an 1,800-mile bike path from Chicago to San Francisco.

2014  
**BIGGEST** Year Ever

Rebuild **160** lane miles

Repair **70** bridges

Build or improve **20** interchanges

MOVE  
ILLINOIS

The Illinois Tollway  
**DRIVING**  
THE FUTURE

The image shows a Prezi presentation slide. On the left, a graphic depicts a road with a dashed white line curving to the right, set against a background of green and white triangles. To the right of this graphic, the text 'The Illinois Tollway' is written in a smaller, grey font, followed by 'DRIVING' in a large, bold, black font, and 'THE FUTURE' in a slightly smaller, bold, black font below it. The entire slide is framed by a black border. At the bottom, a Windows taskbar is visible with several open applications: 'Document1 - Micros...', 'Saving a pres as a P...', 'XMLT Power Point...', and 'Illinois Asphalt Pav...'. The system clock shows '9:03 AM'.