

IAPA

80th Annual Convention


Springfield, IL

Kay Batey
Division Administrator, FHWA
March 14, 2017

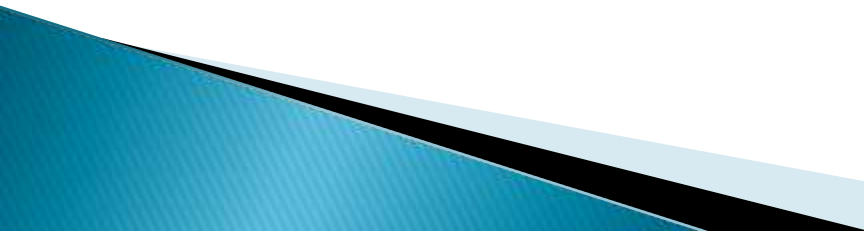
News from FHWA

- ▶ AASHTO Washington Briefing, National Governors Association Meeting and U.S. Conference of Mayors – last week
- ▶ Secretary Chao – keynote speaker at the AASHTO Washington Briefing
 - Conducted roundtable with State CEOs
 - Discussed President's infrastructure plan
 - Administration priorities

AASHTO Briefing

- ▶ **Administration priorities:**
 - Streamlining and accelerating project delivery
 - Regulatory reform
 - Directing discretionary grant program funds for critical infrastructure
 - Potential for private investment
 - Innovative financing
- 

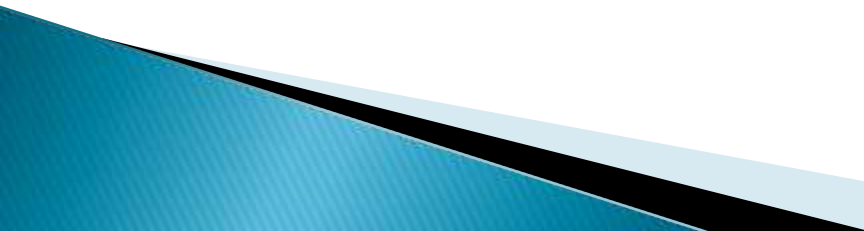
Regulatory Freeze Impacts on Performance Management Rules

- ▶ On January 20th the Trump Administration issued a memo to all agencies which would allow the President's appointees or designees to review new or pending regulations.
 - ▶ This memo calls for agencies to temporarily postpone the effective date of any new regulations that have been published, but that have not yet taken effect, subject to certain exceptions.
 - ▶ Two of FHWA's Performance Management Final rules fall under this category. PM#2 and PM#3 were published on January 18, 2017, and were scheduled to become effective on February 17, 2017.
 - ▶ FHWA continues to work with the Office of the Secretary and the Office of Management and Budget to evaluate the impact of the memo on these rulemakings.
- 


News from FHWA – Regulatory Freeze

- ▶ Asset Management
- ▶ Transportation Performance Measures (PM2 and PM3)
 - Bridge
 - Freight
 - Congestion
 - Air Quality
 - Pavement


Presidential Memoranda/Executive Orders:

- ▶ Executive Order on Enforcing the Regulatory Reform Agenda
 - ▶ Executive Order: Enhancing Public Safety in the Interior of the U.S. (sanctuary cities)
 - ▶ Expediting Environmental Reviews and Approvals for High Priority Infrastructure Projects
- 

Presidential Memoranda/Executive Orders:

- ▶ Reducing Regulation and Controlling Regulatory Costs
 - ▶ Memorandum on the Hiring Freeze
- 

Every Day Counts

- ▶ Advanced Hydraulic Modeling
 - ▶ Pavement Preservation
 - ▶ Safe Transportation for Every Pedestrian
 - ▶ Using Data to Improve Traffic Incident Management
 - ▶ Data Driven Safety Analysis
 - ▶ e-Construction
 - ▶ Ultra High Performance Concrete
- 

Building on our Achievements



EDC-4 (2017-2018)

- 11 innovations (3 from EDC-3)

EDC-3 (2015-2016)

- 11 innovations (2 from EDC-2)

EDC-2 (2013-2014)

- 13 innovations (4 from EDC-1)

EDC-1 (2011-2012)

- 14 innovations

Accelerated deployment of >40 innovations to date

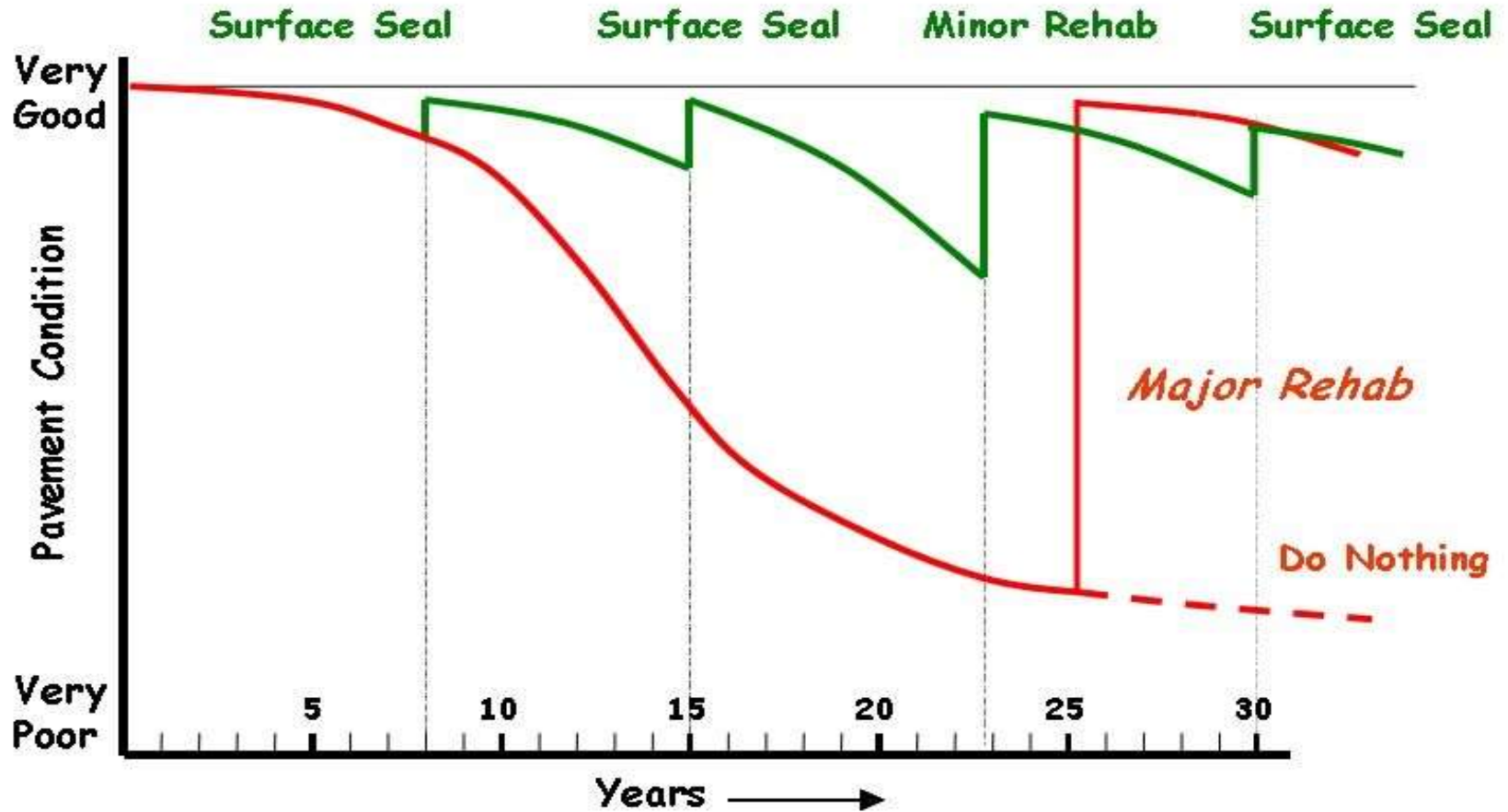
EDC-4 Innovations (2017-2018)

- Automated Traffic Signal Performance Measures (ATSPMs).
- **Pavement Preservation (When, Where, and How)**
- Community Connections
- Data-Driven Safety Analysis (DDSA)
- e-Construction and Partnering: A Vision for the Future
- Integrating NEPA and Permitting
- **Collaborative Hydraulics: Advancing to the Next Generation of Engineering (CHANGE)**
- Road Weather Management – Weather-Savvy Roads
- Safe Transportation for Every Pedestrian (STEP)
- Ultra-High Performance Concrete Connections for PBES
- Using Data to Improve Traffic Incident Management

Pavement Preservation: When and Where

- Network-level approach to managing pavements
 - considers the whole-life costs of the asset to reduce annual preservation costs without sacrificing performance
- Preservation part of the life-cycle analysis of alternate strategies for managing pavements
 - keep pavements in a state of good repair in the most cost-effective manner

*Pavement Management with
"Good Roads Cost Less"
Preservation Strategies*



Source: Utah DOT

Pavement Preservation: When and Where

Implementation Products:

1. Selection Guide
2. Analysis Tool
3. Training
4. Communications Plan
5. Strategy Guidance
6. Metrics

Pavement Preservation: How

Quality Construction and Materials

Flexible Pavements

- Microsurfacing
- Chip Seal
- Slurry Seal/Scrub Seal
- Ultrathin bonded wearing course



Source: Applied Pavement Technologies, 2016



Source: VSSMacropaver, 2016

Rigid Pavements

- Diamond grinding
- Partial-depth repair
- Full-depth repair
- Dowel bar retrofit/cross stitching

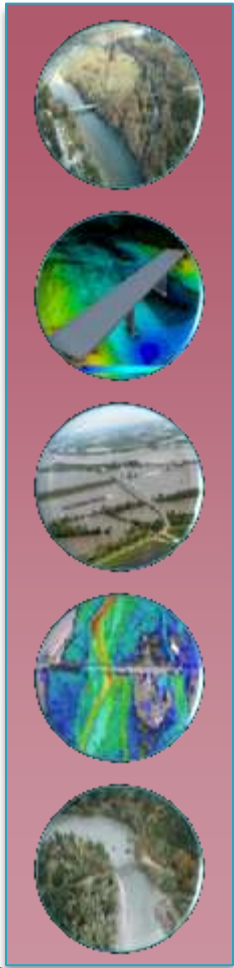


Source: FHWA, 2013

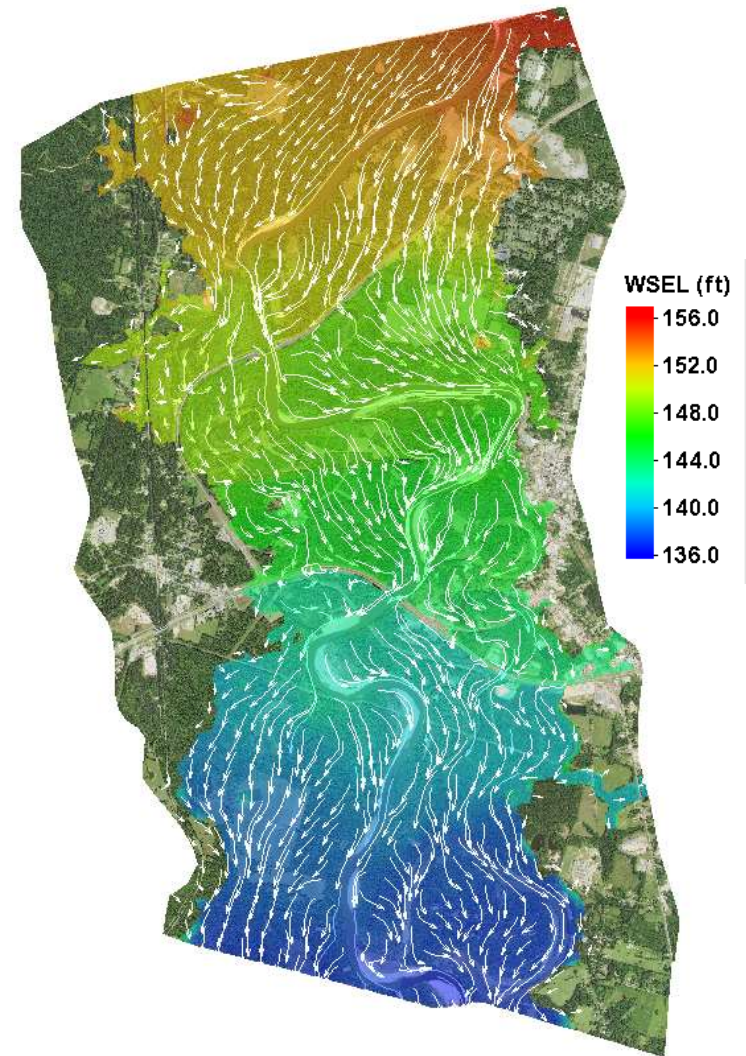


Source: American Concrete Pavement Association, 2016

C.H.A.N.G.E.



- ▶ **C**ollaborative
- ▶ **H**ydraulics:
- ▶ **A**dvancing to the
- ▶ **N**ext
- ▶ **G**eneration of
- ▶ **E**ngineering



C.H.A.N.G.E.



Image Source: Nebraska Department of Roads

C.H.A.N.G.E.



Image Source: Earthstar Graphics (Aerial Image)

C.H.A.N.G.E.

Planned Activities 2017–2018

▶ *Sustaining CHANGE*

- Designation of champions
- Champions working group
- Prepare guidance examples

▶ *Increase awareness & collaboration*

- FAQs & Fact sheets
 - 2D modeling
 - 3D modeling
 - Case studies: 1D v. 2D
- Showcase presentations

▶ *Expand access to training*

- Promote/subsidize training

▶ *Reduce fear & uncertainty*

- Modeling verifications
- Highlight successes

▶ *Expand support options*

- Ongoing over 2017–2018
 - Technical assistance
 - Increase access to software
 - Technical support webinars
 - Web series on successful practices

▶ *Guidance & Practice*

- Improve online user's manual
- Prepare 2D modeling guidance

▶ *Interagency collaboration*

- Identify other agency barriers
 - FEMA approaches
 - Habitat impact assessment

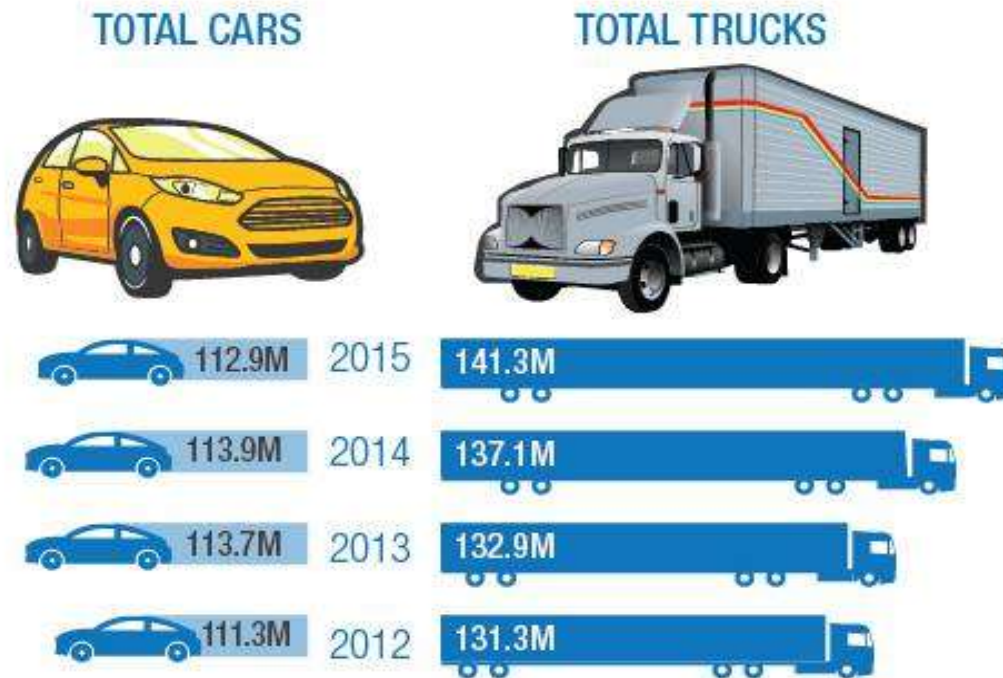
Safety Summary

January and February 2017

- ▶ Crash fatalities – 142 (down 8% from last year same time but 17% above the 5 year average)
- ▶ 1 work zone fatality – 3 in 2016
- ▶ Fatalities involving semis – 33% higher than 2016 (these type crashes represent 11% of all vehicle crash fatalities)
- ▶ Motorcycle fatalities – 11, 3 in 2016
- ▶ Pedestrian fatalities – 21% below 2016, but 9% above 5-year average

WOW Factoid

TRUCK REGISTRATIONS OUTNUMBER CARS FOR FOURTH STRAIGHT YEAR



Source: FHWA Highway Statistics, Table MV-1.

Illinois – Things I have learned:

- ▶ Illinois has 3 interstates that traverse the most states. What are those routes?
- ▶ There are 3 State capitals not served by the interstate highway system. What are they?
- ▶ What percent of roads in America are paved with asphalt?
- ▶ Before IAPA, what was the first name they went by in 1938?
- ▶ From 1941 to 1967 IAPA was known as what?

QUESTIONS???

Thank you!!